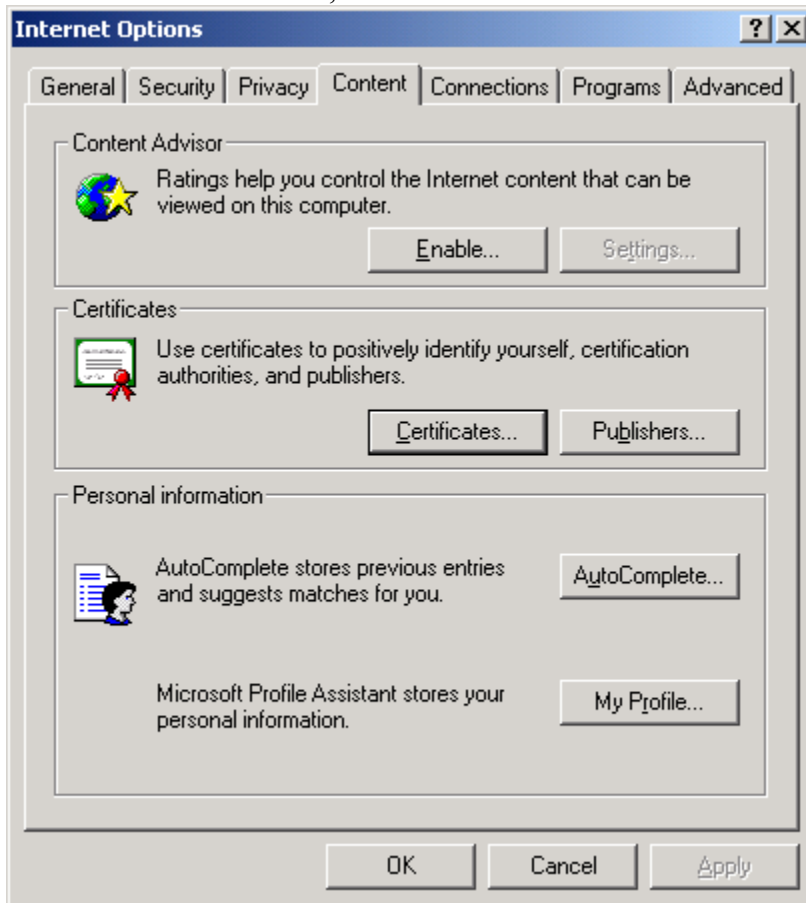


1. Click on the **"Tools"** menu option and then click **"Internet Options..."**.

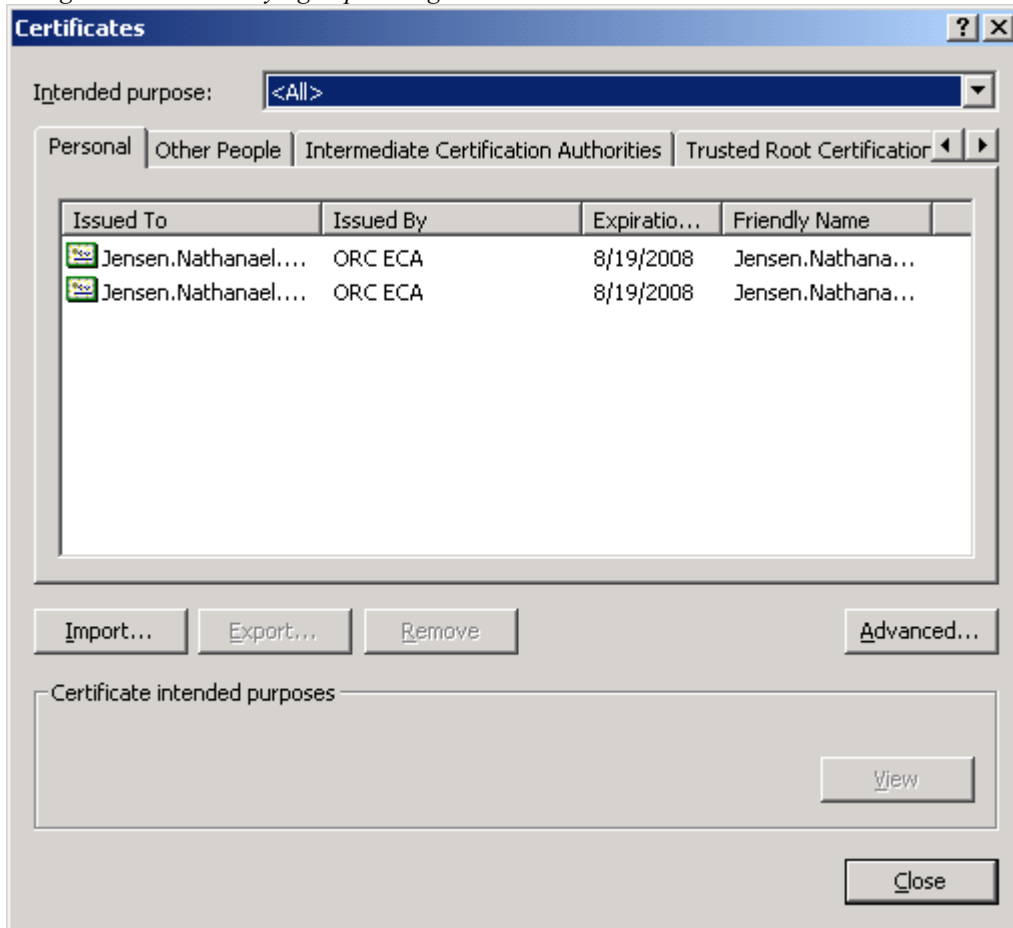


2. Select the **Content** tab, then click the **Certificates...** button.



3. In the Certificates dialogue box, click on the **Import...** button.

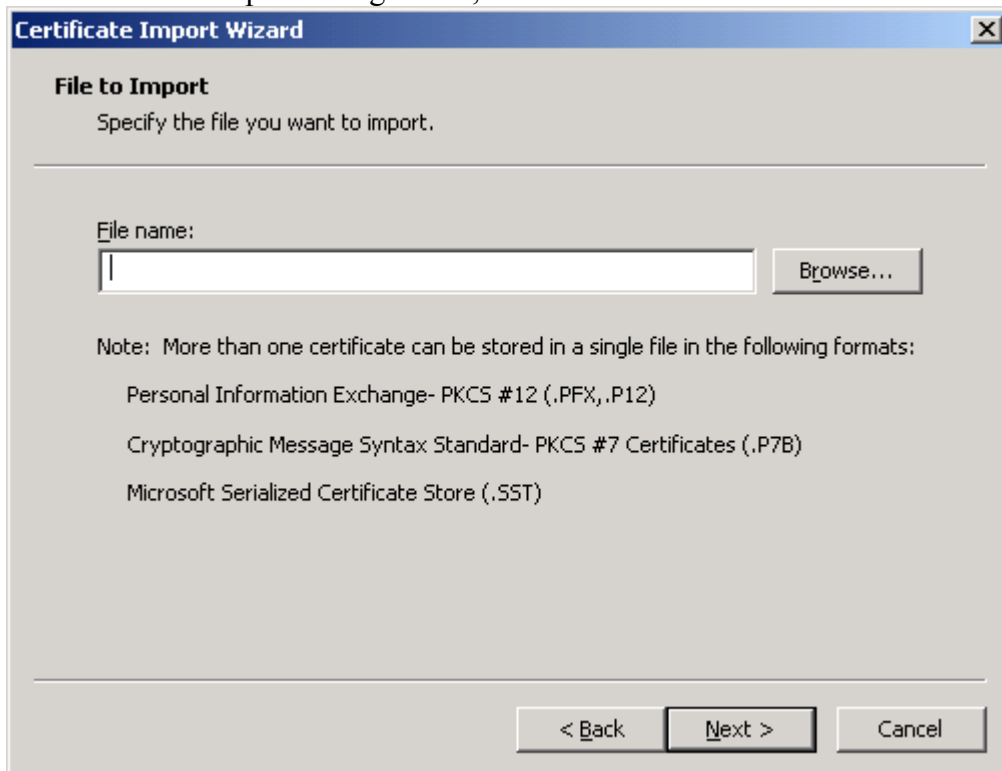
*Note: You do not need to have an entry selected; you do not even need to have any entries listed in the dialogue box. You are trying to put thing into this box.*



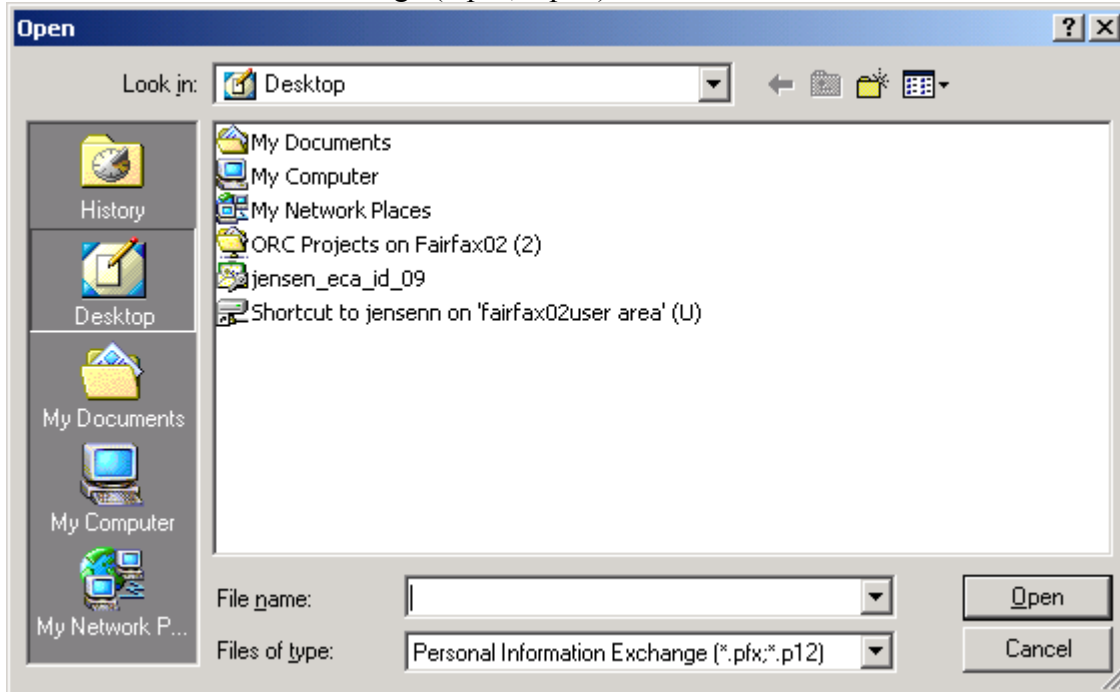
4. When the Certificate Import Wizard pops up, click on the **Next >** button.



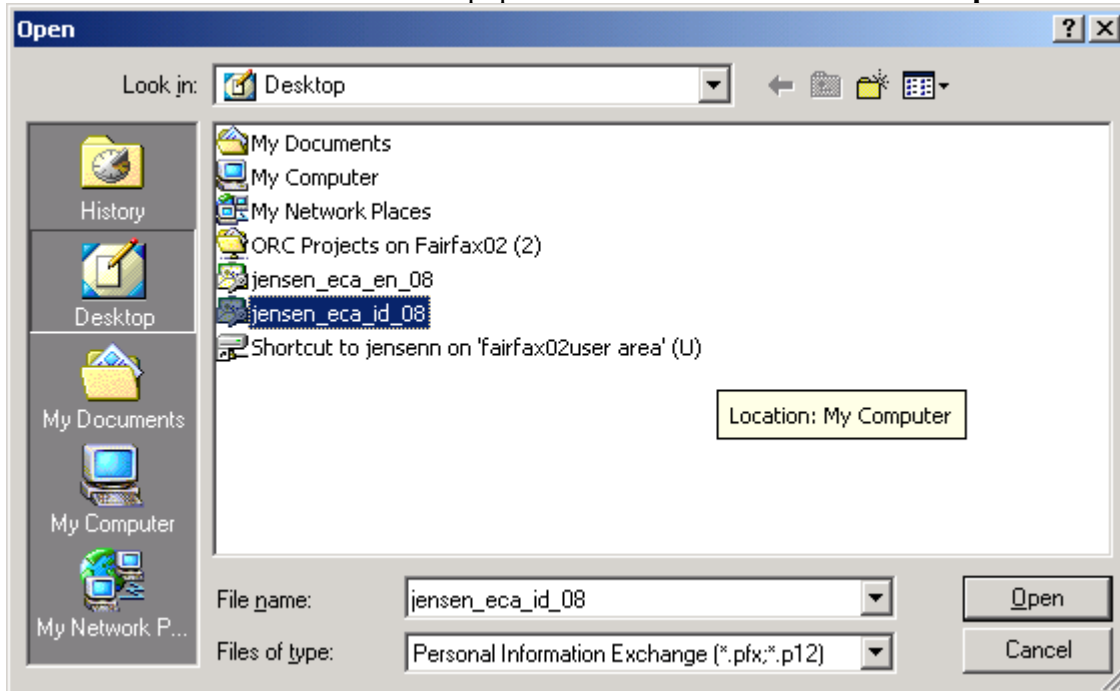
5. In the File to Import dialogue box, click the **Browse...** button.



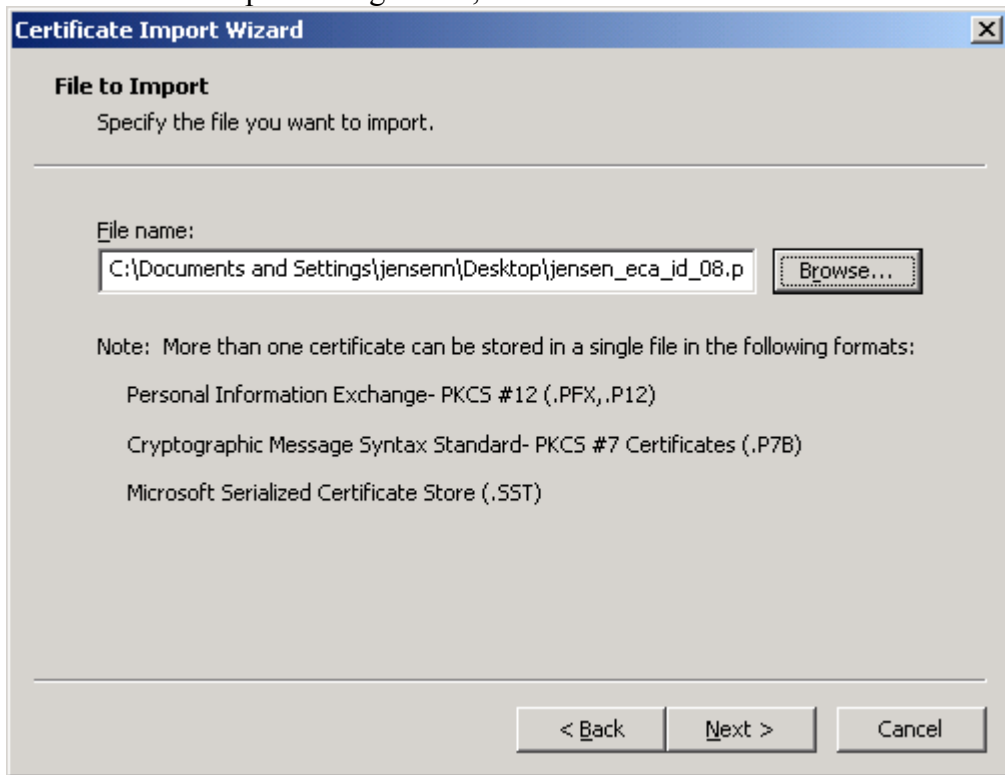
6. In the Open dialogue box, make sure the **Files of type:** pull down menu reads "Personal Information Exchange (\*.pfx, \*.p12)"



7. In the Open dialogue box, navigate to the location where your certificate backup file is located. Click on the file and it will pop into the filename field. Click the **Open** button.



8. In the File to Import dialogue box, click the **Next >** button.

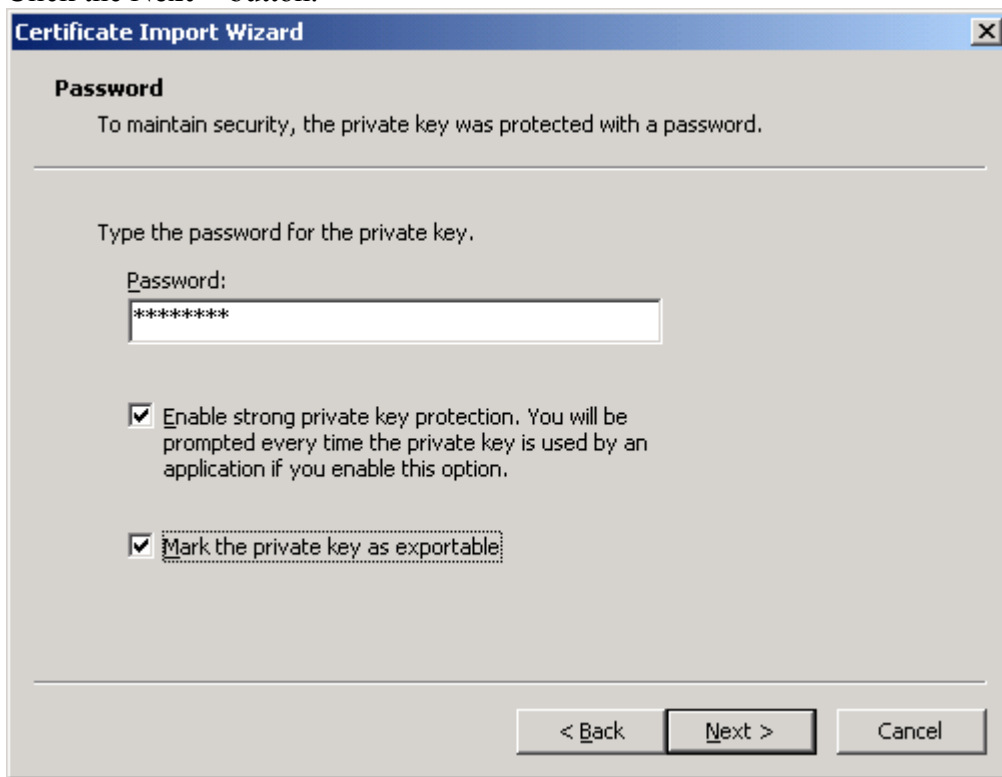


9. In the Password dialog box, check both of the check boxes to **Enable strong private key protection** and **Mark the private key as exportable**.

*NOTE: If you do not **Mark the private key as exportable**, no one (including you) will be able to make a new export (or backup) copy of your certificate from this installaion.*

Enter the password that protects the file from unauthorized access. *This is the password that you assigned to the file when it was created.*

Click the **Next >** button.



The image shows a Windows dialog box titled "Certificate Import Wizard". The dialog has a blue title bar with a close button (X) in the top right corner. The main content area is light gray and contains the following elements:

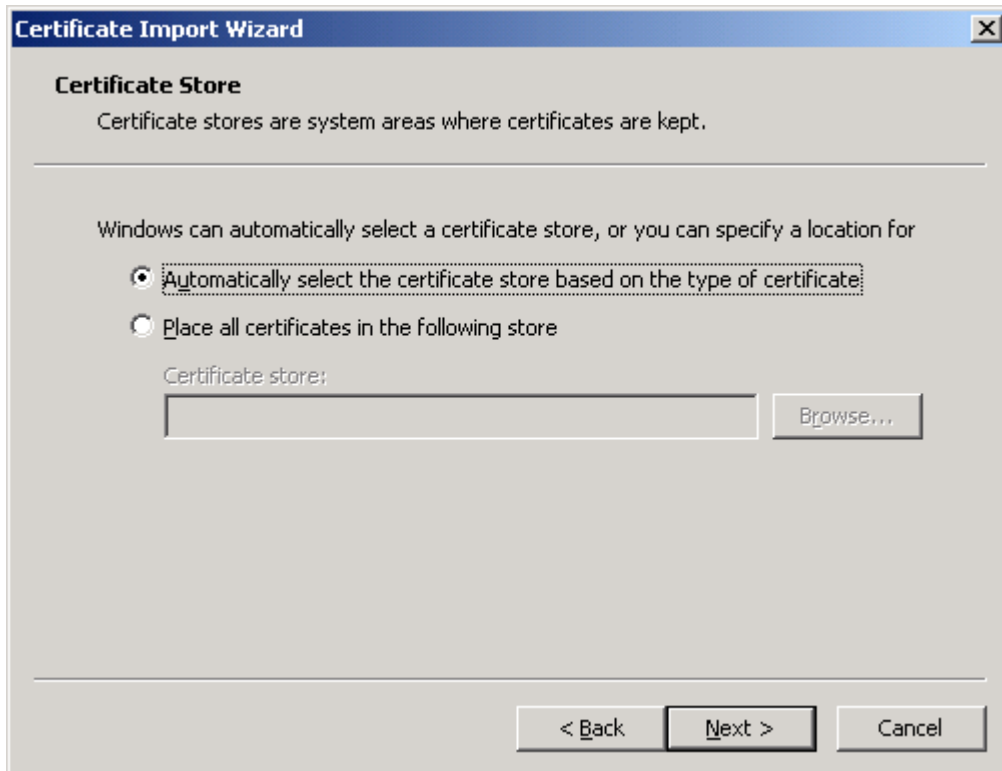
- Password**: A section header.
- To maintain security, the private key was protected with a password.
- A horizontal separator line.
- Type the password for the private key.
- Password:
- A text input field containing "\*\*\*\*\*".
- Two checked checkboxes:
  - Enable strong private key protection.** You will be prompted every time the private key is used by an application if you enable this option.
  - Mark the private key as exportable.**
- A horizontal separator line.
- Three buttons at the bottom: "< Back", "Next >", and "Cancel".

10. Either of these two options is acceptable:

**Automatically select the certificate store based on the type of certificate**

**Or Place all certificates in the following store: Personal**

Click the **Next >** button.



11. At Completing the Certificate Import Wizard, click the **Finish** button.

12. In the Importing a new private exchange key! dialogue box, click the **Set Security Level...** button.



13. Set the security level selector to **High** and click the **Next >** button.

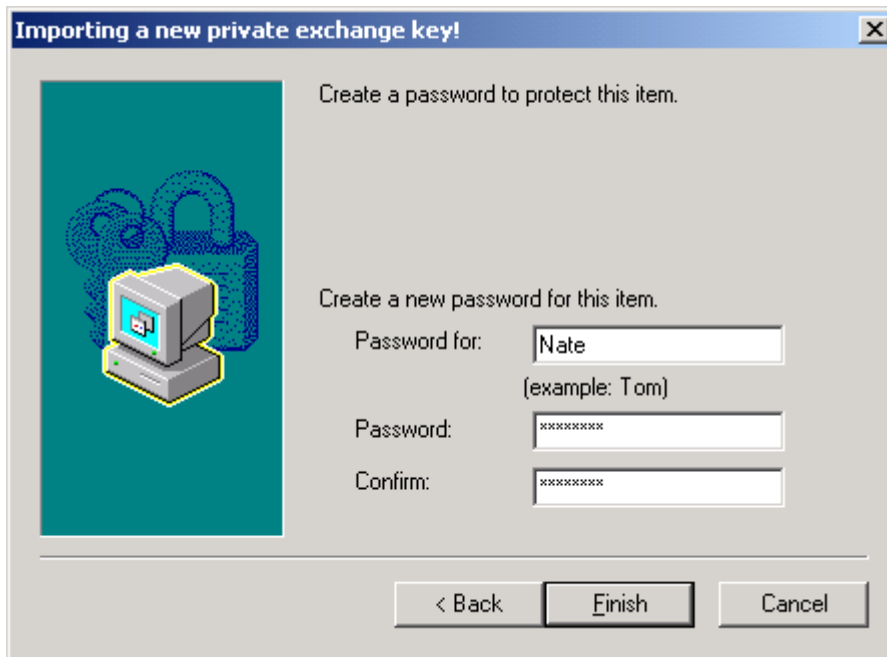


14. If you have a blank text box titled **Password for:** you must enter a label for this certificate.

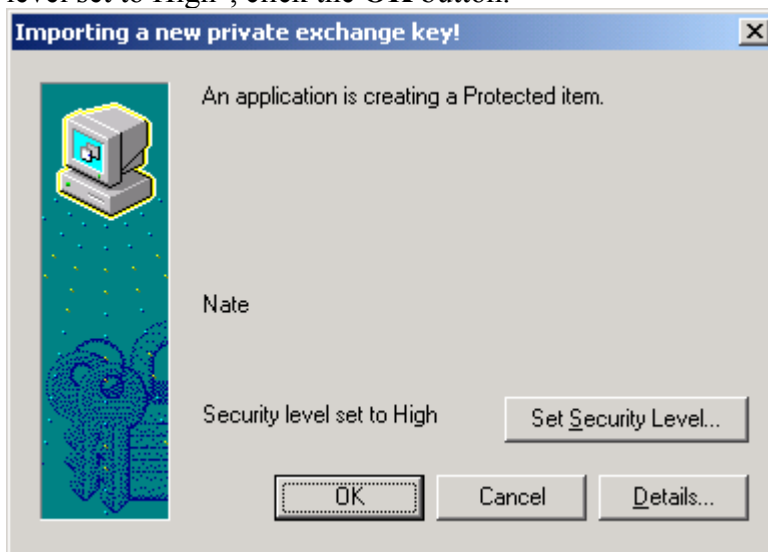
*Windows XP users are not allowed to type in this textbox (some don't even see it); all certificates are labeled CryptoAPI Private Key in Windows XP*

Now assign and confirm a password to the certificate Private Key that you are installing. Then click the **Finish** button.





5. The Importing a new private exchange key! dialog box should now read "Security level set to High", click the **OK** button.



16. At "The import was successful."; click the **OK** button.

